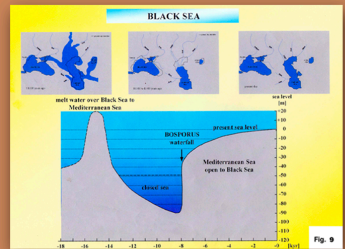
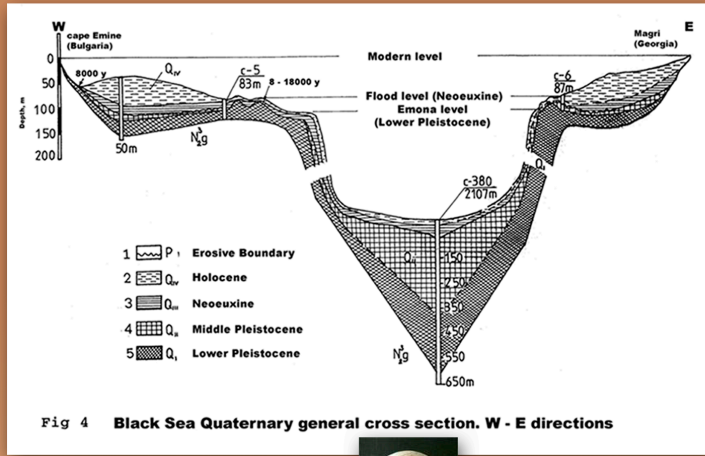
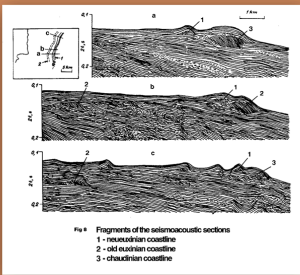
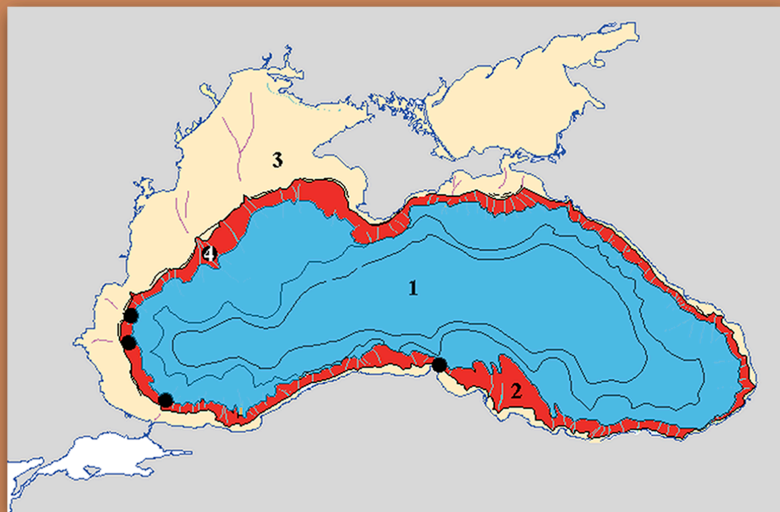
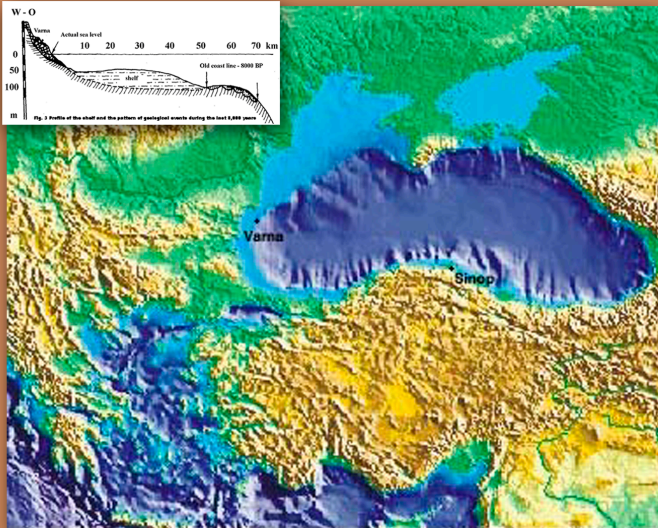




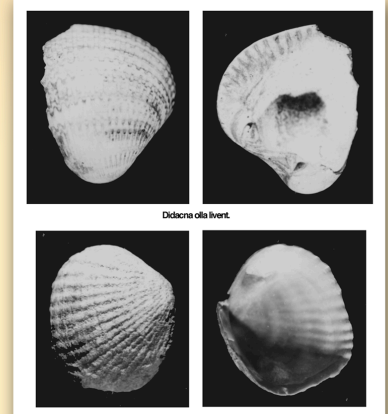
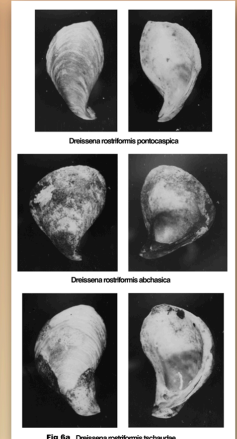
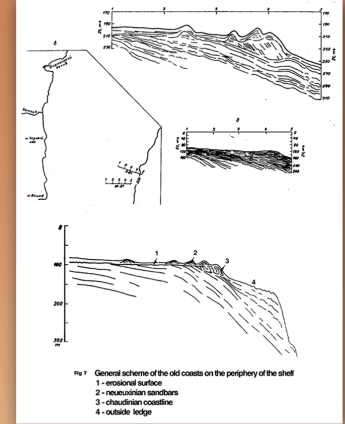
**BULGARIAN ACADEMY OF SCIENCES
INSTITUTE OF OCEANOLOGY - VARNA
DEPARTMENT OF MARINE GEOLOGY AND ARCHAEOLOGY**



Comparative analysis of the signs on an underwater archaeological target from Neolith /'Noah's plate'/ and their connection with those of the ancient civilizations.

| | I | II | III | IV | V | VI | VII |
|----|---|----|-----|----|---|----|-----|
| 1 | + | + | + | + | + | + | + |
| 2 | + | + | + | + | + | + | + |
| 3 | Y | Y | Y | Y | Y | Y | Y |
| 4 | Γ | Γ | Γ | Γ | Γ | Γ | Γ |
| 5 | S | S | S | S | S | S | S |
| 6 | I | I | I | I | I | I | I |
| 7 | > | > | > | > | > | > | > |
| 8 | | | | | | | |
| 9 | < | < | < | < | < | < | < |
| 10 | | | | | | | |
| 11 | | | | | | | |
| 12 | X | X | X | X | X | X | X |
| 13 | H | H | H | H | H | H | H |
| 14 | Δ | Δ | Δ | Δ | Δ | Δ | Δ |
| 15 | ∇ | ∇ | ∇ | ∇ | ∇ | ∇ | ∇ |
| 16 | ∇ | ∇ | ∇ | ∇ | ∇ | ∇ | ∇ |
| 17 | Α | Α | Α | Α | Α | Α | Α |
| 18 | X | X | X | X | X | X | X |
| 19 | ∧ | ∧ | ∧ | ∧ | ∧ | ∧ | ∧ |
| 20 | | | | | | | |
| 21 | ∩ | ∩ | ∩ | ∩ | ∩ | ∩ | ∩ |
| 22 | F | F | F | F | F | F | F |
| 23 | Α | Α | Α | Α | Α | Α | Α |
| 24 | Β | Β | Β | Β | Β | Β | Β |
| 25 | X | X | X | X | X | X | X |
| 26 | T | T | T | T | T | T | T |
| 27 | Ε | Ε | Ε | Ε | Ε | Ε | Ε |
| 28 | ∇ | ∇ | ∇ | ∇ | ∇ | ∇ | ∇ |
| 29 | X | X | X | X | X | X | X |
| 30 | ∇ | ∇ | ∇ | ∇ | ∇ | ∇ | ∇ |

I. 'Noah's plate'
II. Karanovo seal
III. Gradshimka tablet
IV. Magura cave
V. Shumerian
VI. Egypt
VII. India



**QUATERNARY COASTLINES
IN THE WESTERN
BLACK SEA**